

Canberra Potters' Society was established in 1975 and has grown since then to become a vibrant, energetic organization serving the needs of potters and people interested in ceramics in the ACT region. Its objectives are to encourage and foster the development, appreciation and recognition of pottery made by individual craftspeople and designers in a ceramic medium and to provide for the professional development of its members. The Society is a non-profit community group run by a committee of volunteers and two part-time staff.

Membership subscriptions are payable annually. The fees are as stated on the membership application form forming part of this brochure.

The **Annual General Meeting** of the Society is usually held in August or September.

Members' events are held at regular intervals during the year and are publicised in the newsletter, on the Society's web site and on notice boards in the workshops. Visitors are always welcome.

Workshops given by well-known national and international potters are arranged throughout the year.

The **Newsletter 'The Canberra Potter'** is produced each month except January and contains news of coming events and items of interest. Members are encouraged to submit material for inclusion in the newsletter and may place advertisements free of charge. (Submissions may be e-mailed to editor@canberrapotters.com.au.)

The website www.canberrapotters.com.au is updated regularly with class details and times, news of workshops and members' events, items from the newsletter, exhibitions in the WAC gallery, etc. Links to members' own web sites can also be included.

The Society has an extensive **library** of books, journals and videos, which may be borrowed by members. New material is purchased regularly.

Each year the Society holds a selected **exhibition** of members' work.

In Autumn and at Christmas, **'cash & carry' shows** provide an outlet for members wishing to sell their work.

Drop-in sessions, at which members may use facilities in the workshop, are held on Thursdays 9:30am - 12:30pm and 12:30pm - 3.30pm (term times only) and Sundays 1pm - 4pm (every week unless notified otherwise). These sessions cost \$4.40 each or \$33.00 per term for a single weekly session.

A **members-only workshop** equipped with wheels is available to members during class and administration times. After at least 6 months membership, out-of-hours access can be arranged. Access, booking conditions, and fees are available from the administrator.

Firing of members' work is available for \$4.40 per kilo—this includes both bisque and glaze firings and use of the Society's glazes. The Society's **kilns** are available for hire to members.

Pottery classes for adults and children are held during each of the four school terms (see back panel for class times). Classes cover all aspects of pottery, handbuilding and wheelwork as well as glazing, decorating and firing. Specialist courses such as glaze preparation are also run. Up-to-date course information may be obtained from the Society or the web site.

The Society's **artist-in-residence** (and administrator) is Chris Harford, who specialises in tableware and raku.

The Society manages **Watson Arts Centre**, which is an ACT Government arts facility. The Centre houses a spacious **gallery** with a continually changing exhibition schedule. Exhibition proposals are always welcome. **Studio space** is available for lease to committed artists and craftspeople.

The Centre is also home to the Society's shop **'Potters Place - creations in clay'**. In stock you'll find a variety of hand-made ceramics from our members, many of whom are well-known, highly-respected potters. Clay and tools are also available for purchase.



Membership Application Form

NAME _____

NAME 2 IF FAMILY M'SHIP _____

ADDRESS _____

SUBURB _____ STATE _____ POSTCODE _____

PHONE (HOME) _____ PHONE (WORK) _____

MOBILE _____ MOBILE 2 _____

E-MAIL _____

Please send email notification when the newsletter is available on the CPS website **instead of** a printed copy through the post.

I **do not** wish to receive emails notifying me of activities or events that the Society considers may be of interest to members.

SUBSCRIPTIONS FROM 1/7/05 (INC. GST):

SINGLE	\$ 52.00	<input checked="" type="checkbox"/>	SENIOR (SINGLE)	\$ 38.00	<input checked="" type="checkbox"/>
FAMILY	\$ 80.00	<input type="checkbox"/>	SENIOR (FAMILY)	\$ 52.00	<input type="checkbox"/>
			CONCESSION OR FULL-TIME STUDENT	\$ 38.00	<input type="checkbox"/>

PLUS JOINING FEE—NEW MEMBERS OR MEMBERSHIPS
2 MONTHS OR MORE IN ARREARS \$ 10.00

Make cheques payable to **CANBERRA POTTERS' SOCIETY INC.**
If paying by credit card, please complete the following details:

MASTERCARD/VISA NUMBER _____ EXPIRY DATE _____

NAME ON CARD _____ SIGNATURE _____

Send this form to:
CANBERRA POTTERS' SOCIETY INC. (MEMBERSHIP)
PO BOX 7021, WATSON, ACT 2602

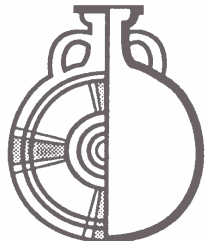
NB The names of new members are published in the Society's monthly newsletter, which is mailed to the membership and posted to the Society's web site. Should you not wish your name to appear, please advise us accordingly.

Office use only:

DATE REC'D	REC. NO.	MEMBER NO	CARD & DB
------------	----------	-----------	-----------

Canberra Potters' Society Inc.

- Established in 1975
- Membership open to anyone with an interest in pottery. Benefits include:
 - ↵ a monthly newsletter
 - ↵ access to our 24-hour members' workshop
 - ↵ use of wheels and equipment at drop-in sessions
 - ↵ kiln hire
 - ↵ firing
 - ↵ discounts on class fees and clay
 - ↵ discounts at some retail outlets (for pottery supplies)
 - ↵ access to the Society's extensive library
 - ↵ hire of lockers in the workshop
- Day and evening pottery classes for adults
- After school, Saturday and school holiday classes for children
- Classes for special groups, eg. home-schooled children
- Pottery 'cash & carry' shows
- Annual Exhibition and special events
- Eftpos facilities



Pottery Classes

Adult classes are run during school terms Monday to Sunday, daytime and evening.

Children's classes are run during school terms after school (4 - 5:30pm) and on Saturdays. One Saturday class is aimed specifically at high school students.

Week-long holiday programmes are held for children during the school holidays.

Specialized courses, e.g. Glaze Formulation and Development are held periodically.



Fees for classes vary according to term length and course content. Children's class fees include all materials and firings.

Classes are run subject to sufficient numbers.

For up-to-date information on current class days, times and fees, pick up the information flyers available at the Pottery Wing or go to www.canberrapotters.com.au.

Enquires for all classes may be directed to the Administrator, Chris Harford, on 6241 7800 (if unanswered, a message can be left on the answering machine), by fax on 6241 1670 or by e-mailing admin@canberrapotters.com.au

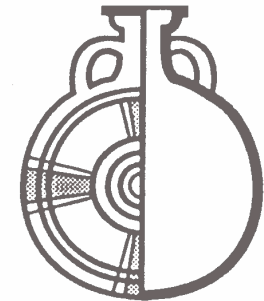


Canberra Potters' Society is supported by the ACT Government. Watson Arts Centre is an ACT Government facility.

All prices quoted in this brochure include GST and are correct at time of printing.

ABN 65 491 135 689

Canberra Potters' Society Inc.



*Watson Arts Centre,
1 Aspinall Street, Watson, ACT*

(02) 6241 7800

fax (02) 6241 1670

PO BOX 7021, WATSON, ACT 2602

admin@canberrapotters.com.au

www.canberrapotters.com.au

