

# The Canberra Potter

The newsletter of Canberra Potters' Society Inc.

September 2011

## IN THIS ISSUE:

Members' Exhibition.....	1
The Info Page.....	2
Pottering Around .....	3
From the Workshop Manager	4
Potters Place .....	5
Open Day Information .....	6
Classifieds .....	7
Watson Arts Centre .....	8

**NEXT NEWSLETTER DEADLINE**  
5PM TUESDAY 20<sup>TH</sup> SEPTEMBER

**NEXT BOARD MEETING**  
TBA

**NEXT ACTIVITIES SUB-COMMITTEE MEETING**  
TBA

**NEXT SHOP MEETING**  
9.30AM SAT 10<sup>TH</sup> SEPTEMBER

**FOR THE FULL COLOUR  
VERSION OF THE  
NEWSLETTER, BE SURE TO  
GO TO  
[canberrapotters.com.au](http://canberrapotters.com.au)**

That most anticipated event in our society calendar is almost upon us. Entry forms for the 2011 members' exhibition were distributed with last month's newsletter but if you've mislaid yours then you can download another from the website, or pick one up at WAC. Reminders for your calendar:

- **Delivery of exhibits to potters place:** 15<sup>th</sup> to 18<sup>th</sup> September 10.30am –3.30pm.
- **Presentation of awards and opening:** 6.30pm Thursday 22<sup>nd</sup> September.
- *Clay Cohesion* is then open until 10<sup>th</sup> October – 10am to 4pm Thursday to Sunday plus the 3<sup>rd</sup> and 10<sup>th</sup> October public holidays.
- Raffle will be drawn 4pm 10<sup>th</sup> October – don't forget to buy your tickets while the exhibition is on.
- **Collection of unsold exhibits:** 4-5pm Monday 10<sup>th</sup> or 9.30-11.30am Tuesday 11<sup>th</sup> October.

NB: *Proposals for installation type entries must be submitted at least 2 weeks prior to delivery of exhibits and will be considered at the discretion of the co-ordinators. Please also contact us prior to delivery if your exhibits will require special handling or set-up during the exhibition's installation. (6241 1670 or [admin@canberrapotters.com.au](mailto:admin@canberrapotters.com.au).)*

As always, a great big 'thank you' to the sponsors of our members' exhibition awards:  
ActewAGL · Ceramics: Art & Perception · Ceramics Technical · Cesco  
Clayworks · Craft ACT: Craft & Design Centre · Journal of Australian Ceramics  
Raglan Gallery & Cultural Centre, Cooma · Walker Ceramics



Supported by



# Open Day

Sunday  
25th September  
10am - 3pm

Come and join us for our 2011 Open Day. Bring your family, friends and colleagues and show them what we're all about.

- Raku firing
- Demonstrations
- Have-a-go wheelthrowing & handbuilding
- Soup bowls and soup
- Trade stands
- Pottery stalls
- Secondhand pottery tools, equipment, books and more
- *Clay Cohesion* in the gallery
- and more ....

Turn to page 6 for more about Open Day ...

CANBERRA POTTERS' SOCIETY INC  
 WATSON ARTS CENTRE  
 1 ASPINALL ST. WATSON ACT  
 PO Box 7021, Watson ACT 2602  
 (02) 6241 7800 (admin)  
 (02) 6241 1670 (WAC/fax)  
 admin@canberrapotters.com.au  
 wcac@canberrapotters.com.au  
 www.canberrapotters.com.au  
 ABN 65 491 135 689

### WORKSHOP MANAGER

Available Mondays & Thursdays  
 9.30am – 12.30pm

At other times please leave a message on the answering machine.

Members are reminded that the Workshop Manager is not obliged to attend members if they 'drop-in' outside of these hours.

### MAIN WORKSHOP DROP-IN SESSIONS

Thursdays (during term time)  
 9.30–12.30pm

Sundays 1-4pm  
 (except Christmas/New Year period as notified in the newsletter)

Please refer to the Workshop & Drop-in Access leaflet for full details of drop-in times & exceptions

Cost: \$5 per 3-hour session

### MEMBERS' WORKSHOP

Members may use this workshop during class, administration and drop-in times.

For unlimited access you must be a CPS member for six months before you can apply for a workshop key. Contact the Workshop Manager for details.

Cost: \$5 per 3-hour session

### FIRING

(20% discount on firing charges on presentation of a current membership card)

\$4.40/kg (bisque & glaze)

\$3.30/kg (bisque or glaze only)

Items decorated with transfers:

\$5.50/kg (bisque & glaze)

\$4.40/kg (bisque only)

### KILN HIRE

Electric: \$5-\$15 depending on kiln hired plus electricity used

Gas: \$5-\$15 depending on kiln hired plus gas used

Raku: \$5 plus \$4 per hour for gas  
 Sawdust: \$5 + own sawdust

To hire a kiln you must have a CPS kiln loading licence or pay for loading (\$25)

Contact the Workshop Manager for all kiln bookings & enquiries

## BOARD, ACTIVITY CO-ORDINATORS & STAFF

PRESIDENT: Ian Hodgson	6254 3270	ihodgson@grapevine.com.au
TREASURER: Roger Ellyard	6247 9131	vanell@grapevine.com.au
BOARD MEMBER: Janet Fieldhouse		
BOARD MEMBER: Robyn Booth		
BOARD MEMBER: Andrea Ho		
BOARD MEMBER: Catherine Reid		
WORKSHOP MANAGER: Chris Harford	6241 7800	classes@canberrapotters.com.au
(after hours)	6241 7732	spinninggum@bigpond.com
PROGRAM MANAGER/PUBLIC OFFICER: SARA HOGWOOD	6241 1670 or 0414 526168	admin@canberrapotters.com.au
OFFICE ASSISTANT (ENROLMENTS): BHAVANA MOYLAN	6241 7800	classes@canberrapotters.com.au
WORKSHOPS: Maryke Henderson	6258 0987	marykehenderson@bigpond.com
MEMBERS' EVENTS: Jane Crick	6281 2594	janecrick@dodo.com.au
NEWSLETTER: Jenny Hadzi-Popovic	6240 8320	editor@canberrapotters.com.au
LIBRARIAN: Sarah Hendriks		library@canberrapotters.com.au
MEMBERS' EXHIB: TBA		
TEACHING STAFF:		
Chris Harford; Jane Crick; Alex de Vos; Cathy Franzi; Maryke Henderson; Garry Palecek; Jackie Lallemand, Alison Lacey		
OTHER STAFF:		
Alex de Vos (cleaner); Sarah Guiver (cleaner); Paul Dumetz (Learning Support Assistant & kiln loader); Garry Palecek (kiln loader)		

*The Canberra Potter* is published eleven times a year from February to December.

Copy deadline is generally about the third week of the month (check each issue for the next deadline).

**Submissions** for the newsletter are *always* welcome so let us know of any upcoming exhibitions you may be having, give us a report on a workshop you've attended, blow your own trumpet and tell us of your achievements – otherwise we may not find out in time for publication. Please also share useful information and tips, etc.

**Copy** can be emailed to editor@canberrapotters.com.au, mailed to PO Box 7021, Watson ACT 2602, or left in the editor's pigeonhole at the Wing. Text is preferred in .doc or .rtf format, or in the body of an email. If only hard copy is provided (handwritten or typed), no responsibility will be accepted for typing errors when transferring to the computer.

**Images** can be emailed in JPG format. Please keep files to a reasonable size. (Images can be resized to, say, 8cm x 8cm before sending.) Large TIF or JPG files can be delivered on CD, either mailed to the PO Box or left in the editor's pigeonhole. Remember to provide relevant information for images, eg title, artist, photographer, etc. PDF text/image files are also welcome.

Canberra Potters' Society gratefully acknowledges the sponsors of its 2011 Members' Exhibition:



The Australian Ceramics Association



australian ceramics





## POTTERING AROUND

As I write this, the kiln at Strathnairn is cooling down slowly following the firing last weekend. It was great to see a good few members signed up for that, including Anneke Paijmans, who came up from Tathra to participate. Thanks to Strathnairn Arts Association for organising the firing and to Ian Jones for managing it.

I hope you all managed to see the magnificent ceramics exhibition in the ANU School of Art gallery. The work was from the Ceramics Workshop's extensive collection, and was made over the years by visiting artists, students and staff. Many thanks to Janet DeBoos for curating it and also for the Material Matters month of clay, which, apart from the main exhibition, has featured numerous short workshops and a master class by visiting artists and regular staff, all priced to encourage your attendance.

The studios are now complete and filling fast. Some fit-out in the residence remains to be finished, and then all that will remain is to get an occupant or two lined up.

Sara Hogwood and Sue Hewat are doing a great job organising the Members' Exhibition. Look for more information in this issue of the newsletter.

Open Day is looming, and you will find more information on that on page 6. I am hoping that the Minister for the Arts, Joy Burch, will be there to officially open the new studios. Fingers crossed also for a good sunny day, of course. Then all we will need is your presence!

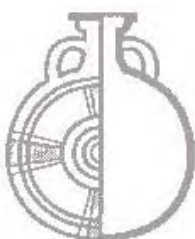
At the recent Board meeting, the Board agreed with a proposal I put to them to change our management structure insofar as to not require the President to chair the Board. This could mean that any member will be eligible to stand for President, as it should be, and not be ruled out, for example, because they are staff and as such, ineligible to be on the Board – by virtue of an artsACT ruling excluding staff.

The Board felt that the position of President is most important for the leadership of society activities, and that it is those that give the society its public face – our classes, workshops, exhibitions, and events for members and the public.

Until such time as we can afford a salaried General Manager or CEO for the society, the President is often seen as acting in that capacity, but as an unpaid volunteer. Adding chairing the Board to this makes it a big job, too much for a volunteer. Splitting the tasks not only makes them manageable, but also demonstrates a degree of separation (not disconnectedness!) necessary for the Board to focus on its legal responsibilities of financial control and business oversight.

This is NOT in place yet, and cannot be put in place unless you, the members, agree with it, and vote it in at what will be a Special General Meeting before the AGM next year. So I invite you to discuss it freely, and send your thoughts on it to me or the other Board members.

I also draw your attention to the need to identify a new President for election at the next AGM, as the constitution precludes me from standing for another term.



Anyway, first priority for now should be your entry in the Members' Exhibition.

Happy potting,

Ian

### Welcome New Members!

Lucy Blackburn  
Margaret Cazabon  
Ariel Ford  
Mariko Lawson  
Tanya Patrick  
Jenny Wong



*Julie Day-Lewis and Yuki Wathelet share a joke while making wads for the kiln packing at Strathnairn*

### *Please note:*

*Due to manufacturer price increases, a number of clay prices have been increased.*

## FROM THE Workshop Manager



The members' throwing /handbuilding area has now been cleaned and re-organised, shelves cleared etc; it would be nice to keep it this way if possible so your assistance with this will help. Please be aware that if pots are not labelled and dated they will be tossed out - and any other stuff on the shelves that is not meant to be there will suffer the same fate.

Kiln no.1 is out of action at the moment. It is in the process of being re-wired after a burnout and we hope to have this fixed shortly.

On Mondays in Term 4 beginning 7 November, there will be a beginners' throwing/handbuilding class run over seven weeks in Studio 1 taken by Maryke Henderson.

The dates for the Gas Firing course in Term 4 are: 30 October, 6 November and 13 November. So, three Sundays, with the last day being the firing day, - set aside a full day for this. A maximum of 12 students applies to this course; check for more details on our website or the new term flyer.

A six-week glaze course will be run on Wednesday evenings with Jane Crick in Studio 1 from 7-10pm beginning 2 November. There is also one locker available for hire; contact the workshop office if you are interested.

Chris

### Seeking a Potter...

*Hands on Studio* is looking for a potter who would like to work 3.5 hours per week with Adults with Disability. Currently there are four students and this could go up to six.

The studio is situated in the M16 Artspace on Blaxland Crescent in Griffith. The pay is about \$28/hour. The students work towards developing their skills and putting their work in exhibitions. There are staff meetings that occur for an hour to an hour and half on the first Monday of each month. Your time is paid for if you help organise an exhibition.

We don't have a working kiln at the moment, so it would be an advantage if you have a kiln and would be prepared to fire works and send an invoice to Catholic Care to cover this cost.

If you are interested, please contact:

Peta Mackenzie Davey  
Coordinator Hands on Studio  
0406 378 613 or 02 6162 4518

## CONGRATULATIONS

*to the following CPS members for their successes at the recent Sydney Teapot Show:*

**CHRIS HARFORD** - Best Overall Teapot

**JANE CRICK** - *Crimes and Consequences* category

**MAREE ANDERSON** - *Clearly Classical* category



*Chris Harford – Best Overall*



*Jane Crick – Crimes & Consequences*



*Maree Anderson – Clearly Classical*

For more information about this year's Sydney Teapot Show, visit:  
<http://www.clayworkers.com.au/>

*Photographs by Paul Symons*

*Reproduced with permission from the Inner City Clayworkers Gallery Co-op.*

### Weston Creek Uniting Church Craft Show

The organisers are seeking people interested in selling their work at this year's show, which is on the 28th and 29th October. Application forms need to be in by the 6th October and are available at [www.westoncreekunitingchurch.org.au/craftshow.html](http://www.westoncreekunitingchurch.org.au/craftshow.html).

For further information contact Pam Taylor 6296 2276, Kathryn Wingett 6288 1003 or Irene Lund 6231 9799.



## POTTERS PLACE CREATIONS IN CLAY

Have you volunteered to help out on Open Day, Sunday 25 September? All the members of Potters Place take an active part and we encourage all CPS members to get involved in the fun of the day. Potters Place member Agnieszka Berger is co-ordinating the demonstrations and she is planning a great program of throwing and hand-building. If you think you would enjoy demonstrating for an hour or two then Agnieszka is the one to contact. Agnieszka makes ceramic jewellery and delicate sculptural work such as this beautiful lady waiting to reward you with a nice cup of tea.

Jane Crick



Agnieszka Berger – Lady with tea pot



### Life model for sculpture

#### A Drop-In Session @ The Strathnairn Foundry

This session is ideal for the sculptor. The participants will be able to rove around the model whilst building a three dimensional study of the subject.

There is no substitute for working from a life model, so being able to study the body's form from every angle whilst working (instead of from a fixed position, as required for life drawing), is the motivation behind this unique session. Participants may use whatever medium they like, whether clay or wax etc. No need to call, just drop-in.

When: 10:30am - 1:30pm Thursdays

Cost: \$15 per drop-in towards the model's fees

For more information please contact:

Peter King on 62419094 or Robin Errey on 0409 031 066 or by email, [robin@chillistock.com](mailto:robin@chillistock.com)

THE STRATHNAIN FOUNDRY  
90 Stockdill Drive,  
HOLT ACT 2615

### Vitrify Alcorso Ceramic Award 2012

The Vitrify Alcorso Ceramic Award is \$10,000 annual prize for ceramics.

The award is open to artists nationally and is non-acquisitive.

Entries must be received by  
Friday 7th October 2011

More information and entry guidelines can be found on the website: [www.vitrify.com.au](http://www.vitrify.com.au)

## Potters Needs



*Walkers,  
Clayworks,  
Feeneys and  
Keans Clays.  
Beautiful  
pottery books  
and a wide  
range of Deco,  
Cesco and  
Clayworks  
colours.*

*'Ian is the kiln doctor and can solve your technical problems.'*

**p-** 02 6336 0411

**f-** 02 6336 0898

email: [info@pottersneeds.com.au](mailto:info@pottersneeds.com.au)  
[www.pottersneeds.com.au](http://www.pottersneeds.com.au)

# More about Open Day

## Sunday 25th September

### 10am - 3pm

**DEMONSTRATORS** Wheelthrowing and handbuilding demonstrations and have-a-go opportunities are a really big part of open day. Agnieszka Berger is organising the demonstration roster and needs volunteers who can spare an hour or two (or more!) to demonstrate throwing and handbuilding techniques, and assist visitors who want to have a go themselves. Agnieszka would love to hear from you **NOW** if you can help – email is her preferred contact method - [ninaclaynina@gmail.com](mailto:ninaclaynina@gmail.com) - or you can phone her on 0434 761843.

**SOUP** If you can supply soup, or help with serving on the day, please contact Marlene Flanagan on 6249 1493 or [marleneflan@bigpond.com.au](mailto:marleneflan@bigpond.com.au).

- Soups should not include meat, fish or cream.
- Don't make more than you can safely store in your refrigerator before delivering for open day.
- Your soup should be accompanied by a list of its ingredients.
- Ensure that you label your container, both lid and base, so that you get the right ones back at the end of the day.

**SOUP BOWLS** There's no point having soup if we don't have soup bowls and as they always sell well we need a good supply. If you haven't been to an open day before, the idea is that each bowl purchased can have a free serving of soup.

All soup bowls sell for \$15. The Society retains its usual 22% sales commission and the balance is paid to the bowl makers.

- ✓ Each bowl you supply must be identified with a **removable** sticky label with your initials, name or some identifier that is unique to you.
- ✓ Bring your bowls along to the foyer from 9am on Sunday 25<sup>th</sup> September, or drop them off in the foyer kitchen between 10am and 4pm on Friday 23<sup>rd</sup> or Saturday 24<sup>th</sup> September.
- ✓ When dropping off your bowls please record your name, the initials/name/identifier that you used and the number of bowls that you are supplying on the list that will be in the foyer kitchen.
- ✓ Any questions, call Sara on 6241 1670 or email [admin@canberrapotters.com.au](mailto:admin@canberrapotters.com.au).

**POTTERY STALLS** We have a few pottery market stalls lined up but would like more. If you're interested in having a stall contact the office – [admin@canberrapotters.com.au](mailto:admin@canberrapotters.com.au) or 6241 1670 – as soon as possible.

**SECONDHAND STALL** Judy McDonald is once again running a secondhand stall so if you have any pottery equipment, tools, materials, etc that you'd like to sell, bring them along on the day. Make sure that everything is clearly identified and priced on a removable label. NB If items are purchased using the EFTPOS facilities then 5% is retained by the society to cover costs; the balance is paid to you.

Items not sold at the end of the day **must** be collected by the seller.

**ON THE DAY** If you haven't already signed yourself up as a demonstrator, soup service helper or market stall but would like to be involved then we're sure to be able to find some use for you! Register as a helper by calling the office on 6241 1670 or email [admin@canberrapotters.com.au](mailto:admin@canberrapotters.com.au).

## POTS FOR RAKU FIRING

We need lots of small bottles, vases and cylinders for raku firing on open day.

**A making session is therefore scheduled for SUNDAY 4<sup>th</sup> SEPTEMBER from 1 to 4pm in the main workshop.**

We realise that this is Fathers' Day but hope that Dad won't mind if you sneak off for a few hours to play with clay!

We'll provide all the clay, you just need to bring your tools. Throwing is probably the quickest way to make lots of pieces but handbuilders are equally welcome of course.

We're aiming for a social occasion – tea, coffee and cake will be provided!

If you can let us know that you'll be coming by 4pm Thursday 1<sup>st</sup> September then it will help with catering for the refreshments but if you decide at the last minute to join us then just turn up (but perhaps bring a cake with you!!).

RSVP 6241 1670 or [admin@canberrapotters.com.au](mailto:admin@canberrapotters.com.au)



## CLASSIFIEDS

### HOT TO POT WORKSHOPS Moonshill, 3739 Lumley Road, Tarago

"FIBRE IN CLAY"  
Sunday 4 September  
10am to 4pm

Still places available – this workshop looks at the specialised uses of the additions of various fibres to a clay body, e.g. paper, ceramic fibre or synthetic fibre. \$88 (includes materials and lunch). Bookings essential.

**STUDIO OPEN DAYS** Saturday 1, Sunday 2 and Monday 3 October - no charge on these days. No booking required. Drop in and enjoy working with clay. Firings by arrangement.

Full details from Jane on 6161 0806 or at [www.janecrick.netfirms.com](http://www.janecrick.netfirms.com) or e: [janecrick@dodo.com.au](mailto:janecrick@dodo.com.au)

### FOR SALE

Ward Electric Kiln  
Approximately 3.5 cubic feet  
Brick with Sunvic Simmerstat  
regulator 20 amps - 2x1 phase.  
Goes to stoneware.

Kiln furniture; spare elements;  
pyrometric cones.  
Good condition. \$600 O.N.O

More info: Jane 6161 0806

### ArtStart

*Funding for graduate and emerging  
artists*

Closing date:

**27 September 2011**

**Australia Council National**

The ArtStart program provides financial assistance to recent creative arts graduates who are committed to establishing a career as a professional artist. Graduates who plan to earn income or gain employment as a professional artist in the visual arts, hybrid and media arts, performing arts, literature or in community arts and cultural development may apply via the online application process.

Gavin Gostelow is an amateur potter who has just moved down from Sydney. He has an interest in using local clays to handbuild bonsai pots. He describes his house as being built on a 'nasty clay subsoil that is certainly not fit for gardening but would seem to hold together quite well for handbuilding'.

If anyone has used local clays and would like to share their information and knowledge you can contact Gavin at [marvin@pnc.com.au](mailto:marvin@pnc.com.au).



If you want to attend *Spring Fever*, presented by **Suncoast Clayworkers**, you'd better get in quick!

**7-11 September 2011**

Tutors: Peter Beard (UK); Joanne Searle (ACT); Cameron Williams (NSW); Andrew Bryant (QLD)

<http://www.suncoastclayworkers.org.au/>

### 70 Years at Sturt

Sturt is celebrating its 70<sup>th</sup> birthday with an exhibition from the Sturt Permanent Collection

*Exhibition opens Sunday 2<sup>nd</sup> October*

Continues until the 20<sup>th</sup> November

Cnr Range Road & Waverley Parade, Mittagong NSW 2575

<http://www.sturt.nsw.edu.au>

**STURT GALLERY** 02 4860 2083

Open daily 10am - 5pm

(except Good Friday, Christmas Day & Boxing Day)

**STURT CAFÉ** 02 4860 2086

Wednesday - Friday 10am - 3pm

Saturday & Sunday 10am - 4pm

### STURT SUMMER SCHOOL

Details are now available at

[http://www.sturt.nsw.edu.au/course\\_summer.htm](http://www.sturt.nsw.edu.au/course_summer.htm)

**Tintelingen** (*twinkling*), August's exhibition of work by Dutch artist Netty van den Heuvel, might have been small with just five ceramic exhibits and three photographic images but it certainly stood out as far from the ordinary.



*Tintelingen – Netty van den Heuvel*

Netty likes to combine non-clay materials with clay in her works. The use of silicone in the piece entitled *Breast Feeling* was interesting both for the softness of the silicone contrasted against the hardness of the porcelain and the inevitable thoughts of silicone breast implants that added an extra dimension to the piece.

Three large images (prints of some of Netty's works photographed by her partner and fellow ceramic artist Anton Reijnders) were supplied by the ANU Ceramics Department and complemented the 3D works beautifully.

**3 Score Plus 10** was an exhibition celebrating Canberra artist Beverley Thomas' latest milestone birthday and as such it caught the interest of the local media. Beverley was interviewed by City News, the Canberra Times and Artsound radio. This could be a useful tip for anyone planning an exhibition!

Beverley's exhibition encompassed textiles, prints and paintings and showed how easily she incorporates different media and artistic techniques into her art practice.



*Above & below – Bev Thomas*



From 1<sup>st</sup> September

**Too Much Fun - Steve Roper**  
1<sup>st</sup> to 11<sup>th</sup> September

Join us for these  
September events

**Thursday 1<sup>st</sup> at 6pm**  
Opening of *Too Much Fun*

**Thursday 22<sup>nd</sup> 6.30pm**  
Opening of  
*Clay Cohesion*

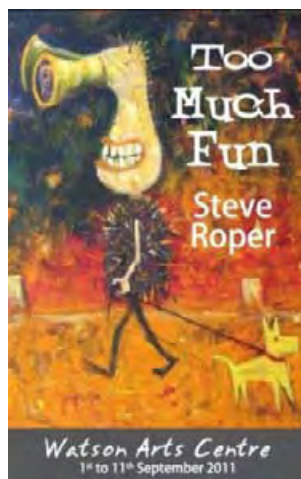
**Sunday 25<sup>th</sup>**  
**10am-3pm**  
Open Day



Opening 6pm 1st September with Mark Bishop, Deputy Principal, Dickson College

CPS member Steve Roper has painted landscapes, interiors and abstract work for many years and had expected to keep doing so for some time. However, as **Too Much Fun** shows, his work has recently gone in a new direction.

In his younger days Steve was a cartoonist for various small papers, including *Tharunka* (1976), the UNSW student newspaper. Since that time he has continued to draw silly figures and scenes all through his sketchbooks and on assorted bits of paper. The realisation that he actually like these figures, and that other people were intrigued by them, led him to think about working them up as bigger, finished drawings, paintings and sculptures.



What was originally envisaged as a small project quickly expanded as Steve opened up the work, and his mind, to his unconscious imagination, a process aided by meditation and

psychoanalysis. The images kept flowing. "The surprising thing was", says Steve, "that they weren't just silly (well, okay, some of them are) but that they can work on a strong emotional level too."

The images in *Too Much Fun* draw on four main subject areas: music, street scenes, people and pets, and demons. The work is

mainly acrylic and oil paintings and ink drawings but also includes clay sculptures.

and then



**clay cohesion**

Canberra Potters' Society  
2011 Members' Exhibition

**Opening 6.30pm Thursday 22<sup>nd</sup> September**

*The exhibition then continues until Monday 10th October (open Thursday to Sunday plus the two public holidays of Monday 3<sup>rd</sup> and Monday 10<sup>th</sup> October)*

**Clay Cohesion** is our 2011 Members' Exhibition, an event not to be missed. If you can't make it to the opening on Thursday 22<sup>nd</sup> then come along on Sunday 25<sup>th</sup>, our Open Day.

For further information about entering exhibits, see the front page and/or the exhibition entry form.